

bongo | A+ SERIE

cecotec

MAX 45 CONNECTED

Patinete eléctrico/Electric scooter



Manual de instrucciones
Instruction manual
Manuel d'instructions
Bedienungsanleitung
Manuale di istruzioni
Manual de instruções
Instructiehandleiding
Instrukcja obsługi
Návod k použití

1. WARNINGS

Fig. 1

You must read and follow the safety instructions in this manual before riding the electric scooter. Use approved safety equipment such as helmets or knee pads. This product is intended for use as a personal mobility vehicle for the purpose of transporting a single person in a public or private place.

Fig. 2

Do not use the vehicle with rainy weather.

Fig. 3

The electric scooter cannot be used by more than a person at a time.

Fig. 4

This product cannot be used by children under 16 years old, people over 60 years old and pregnant women. (*Check the current local regulations).

Fig. 5

Minimum weight allowed: 25 kg. Maximum weight allowed: 100 kg.
Recommended maximum user height: up to 2 metres.

Fig. 6

Do not ride the electric scooter under the influence of alcoholic drinks, drugs, or medicine whose intake is not advisable while driving.

Fig. 7

Do not use the phone or listen to music while riding the electric scooter.

Fig. 8

Pay special attention while riding when there is sand, puddles, mud, ice, snow, or stairs and when it is dark or the floor is wet. Do not touch the brake disc in poor light conditions or after use, as it may be hot.

Fig. 9

Do not use the electric scooter in hazardous areas where there could be flammable or explosive substances, liquids, or dirt.

Fig. 10

This electric scooter is not designed to be driven on motorways, highways, or intercity roads. Check the current legislation of your local authority on where electric scooters are allowed to

be ridden.

Fig. 11

Do not place heavy objects on the handlebar. Any load attached to the handlebars will affect the stability of the vehicle.

Fig. 12

Avoid climbing up and down the stairs with the electric scooter.

Fig. 13

Always ride with both hands on the handlebar.

Fig. 14

Do not ride the electric scooter with just one foot.

Fig. 15

Do not press the accelerator when walking along with the electric scooter.

Fig. 16

Note that the braking distance will be longer in puddles, wet surfaces, and/or in wet weather conditions. The electric scooter is intended for use on flat, level, and dry surfaces.

Fig. 17

Be careful with your head when riding under roofed areas, like a door.

Fig. 18

When riding at high speed, do not turn the handlebar abruptly.

Fig. 19

Reduce speed when descending slopes and use both brakes.

Fig. 20

Do not ride at high speed over obstacles like steps, kerbs, or speed bumps.

Fig. 21

Do not hit obstacles with the wheels.

Fig. 22

Do not touch the hub assembly motor immediately after riding, as it may be hot. Make regular visual checks of components or parts subject to wear such as the chassis, forks, tyres, brakes, etc. This will allow you to detect cracks or damage in high-stress areas that may indicate that the component exceeded its service life and needs to be replaced. Regular maintenance of the electric scooter and its components will extend its service life. Periodically

check the tightness of the bolted parts, especially the wheel axles, the folding system, the steering system, and the braking system.

Ask your dealer to refer you to an appropriate training organisation.

Avoid high traffic or overcrowded areas and anticipate your path and speed by respecting the traffic code of the road and its vulnerable users.

Indicate your presence when approaching a pedestrian or cyclist and when you are not seen and/or heard. Remember to cross protected areas on foot and in all situations take care of yourself and others. Remove any sharp edges that may have been formed by using the vehicle.

Do not modify the vehicle This vehicle is not designed for stunt use.

2. PARTS AND COMPONENTS

Fig. 23

1. Accelerator
2. Brake
3. Headlight
4. Stem
5. Folding system latch
6. Motor
7. Kickstand
8. Brake disc
9. Handlebar grips
10. LED display
11. Handlebar
12. Folding system lever
13. Charging port
14. Folding hook fixing
15. Anti-slip footrest
16. Rear mudguard
17. Rear light
18. Battery
19. Battery charger

Fig. 24

1. Handlebar brake

2. LED display
3. Function button
4. Power button
5. Accelerator
6. Error indicator
7. Battery
8. Speed
9. Overheating indicator
10. Mode indicator
11. Speed units
12. Bluetooth indicator

3. BEFORE USE

- Take the product out of the box and remove all packaging materials.
- Make sure all parts and accessories are present and in good conditions. If there is any piece missing or not in good condition, immediately contact the Technical Support Service of Cecotec.

Box contents:

Fig. 23

1. Bongo Serie A+ Max 45 Connected electric scooter

Fig. 25

1. Charger
2. 1 Allen key
3. 1 adapter for inflating the wheels
4. Instruction manual

4. PRODUCT ASSEMBLY

Unfolding

Fig. 26

1. Pull the stem upwards while you press the rear mudguard downwards.
2. Raise the stem and move the folding lever to the closed position to lock the stem in position.
3. Adjust the brake with the Allen key.
4. Tighten and adjust the grips paying attention to the direction of rotation.

Folding

Fig. 27

1. Move the latch vertically upwards to release the folding lever.
2. Move the folding lever.
3. Turn the folding lever downwards and then the stem.
4. Match the folding hook fixing with the rear mudguard and press it downwards to make sure it is fixed.

Handlebar grips assembly

- The handlebar grips are attached to the handlebars, but they are not mounted.
- Screw each cuff into the corresponding hole until they are securely fastened.

Battery release

Fig. 28

- Unlock the lock on the upper part of the battery.
- Pull the battery upwards.
- Keep the battery up and remove it horizontally.

Battery assembly

- Follow the inverse process described in the previous section.
- Insert the battery in horizontal position by fixing the terminals.
- Push the battery downwards until the lock on the housing is locked into position.

5. OPERATION**5.1. Power and operation**

Fig. 29

1. Hold down the power button for 2 seconds.
2. Step on the footrest with one foot and use the other foot to propel yourself to start sliding.
3. Place both feet on the footrest.
4. Press the accelerator with your right hand. The electric motor will deliver power when the speed of the scooter is 3 km/h or more.
5. Press the accelerator to increase the speed.

Warning

Do not ride too fast.

6. Use the brake to stop or to ride slower. Step on the rear mudguard softly for an easier braking process.

7. Get off the electric scooter only when you ride at a very low speed or when you are still.
8. Fold down the stand (item no. 7 - Fig. 23) to park your electric scooter when it is not in use.

Warning

The Bongo Bongo Serie A+ Max 45 Connected model has an APP for Smartphone. Thanks to Bluetooth connectivity, the scooter can be paired with the mobile phone and display information and settings.

5.2 driving modes**Control panel**

- Power button: hold down this button to turn the electric scooter on and off.
- Function button: press this button to select one of the following modes:
 1. Pedestrian mode: the mode indicator on the display will be off. In this mode the scooter can reach 6 km/h.
 2. Comfort mode: the mode indicator on the display will show a white "D". In this mode the scooter can reach 15 km/h.
 3. Sport mode: the mode indicator on the display will show a red "D". In this mode the scooter can reach 25 km/h.

NOTE:

- Measured with a weight of 80 kg, fully charged battery, flat surface, no inclination, no wind, and an ambient temperature of approx. 25°C.
- Function button: Press this push button twice to switch on the headlight and tail light. If the light is off, when the brake is applied, the tail light will come on. If the light is on, when the brake is applied, the tail lamp will illuminate more brightly.

Configuration menu

If you press and hold the function button and the power button simultaneously, you will enter the configuration menu. Press the function button to navigate between the different configuration functions (P0 and P1). Access the desired function by pressing the power button and toggle between 0 and 1 by pressing the function button. Select the desired setting by pressing the power button. To return to the initial screen, hold down both buttons. The different configuration functions are:

1. P0 - Units of measurement: selection of km/h (0) or mph (1). Speed can be measured in kilometres per hour (0) or miles per hour (1).
2. P1 - Cruise mode: activation (1) and deactivation (0) of cruise speed. Hold the same speed for 6 seconds to keep the scooter moving at that speed steadily, without the need of operating the accelerator. To deactivate the cruise mode, operate the accelerator or brake.

5.3. How to charge the electric scooter

- You can charge the device in two manners:
- 1. Without removing the battery: connect the charger to the electric scooter as shown in figure 30.
- 2. Removing the battery: remove the battery and connect the charger to the battery as indicated in figure 31.
- The charger indicator light will change from red (charging) to green when 100% charge is reached.
- Warning: stop charging the battery when the indicator colour changes. Do not exceed the battery charging time so as not to affect its shelf life.
- Warning: cover the charging port with the anti-dirt tap to prevent any metallic object from coming into contact with it and causing short circuits.

5.4 Tyre use

- For proper operation of the electric scooter, be sure to always check and maintain the correct tyre pressure before each use.
- The optimum tyre pressure is 36 PSI / 2.5 bar / 250 kPa.
- We recommend you carry out periodic tests to ensure the pressure is between the recommended values to achieve efficient operation.
- To maximise the tyres' shelf life we recommend using heat-sealing gels to prevent punctures and maintain maximum effectiveness and performance.

6. CLEANING AND MAINTENANCE

- Make sure the product is not plugged in the power supply or turned on before cleaning or maintenance.
- Use a soft cloth to clean the outer housing of the electric scooter.
- Never use alcohol, petrol, paraffin, corrosive, or abrasive products to clean the electric scooter.
- Never immerse the electric scooter in water or any other liquid to clean it, as this could damage the electronic parts permanently.
- Never use pressurised water to clean the electric scooter.
- Do not try to repair the electric scooter on your own. In case it does not operate correctly or it is damaged, please, contact Cecotec Technical Support Service.
- Self-tapping nuts and other fasteners may lose their efficiency and may need to be retightened.

Brake discs

You must check that the brake disc is in perfect condition, aligned with the brake caliper. To facilitate this adjustment we include an Allen key. The brake pads are consumable and must be replaced when their useful life comes to an end.

Storage

- Make sure the electric scooter is charged before storing it for long periods of time. Charge it at least once a month.
- Charge it only if the room temperature is between 0°C and 35°C and store it at a temperature between -10°C and 35°C.
- Do not store the electric scooter outdoors. Store it in a safe and dry place. Cover it to protect it from dust if necessary.

7. TROUBLESHOOTING

FAULT	TROUBLESHOOTING
Overheating	Stop the electric scooter until temperature decreases
Error A: Electric brake failure Error B: Throttle error Error C: Motor error	Contact the Cecotec Technical Support Service
Blocked driving wheel	Contact the Cecotec Technical Support Service
It does not turn on	Check the battery is charged. Contact the Cecotec Technical Support Service

8. TECHNICAL SPECIFICATIONS

Product reference: 07303

Model: Bongo Serie A+ Max 45 Connected electric scooter

Features	Measuring units	Specifications
Dimensions	Folded	105 x 42 x 45 cm
	Unfolded	105 x 42 x 116 cm (1)
Weight	Electric scooter weight	14,40 kg
Use requirements	Min-max weight	25-100 kg
	Min-max height	100-200 cm
	Age bracket	16-60 year (2)
Technical specifications	Battery life	Up to 45 km (3)
	Max. speed	25 km/h
	Max. inclination	10°
	Operating temperature	-10°/40°C
	Storage temperature	-15°/45°C
	IP protection rating	IPX4
Motor	Max. Power	700 W
	Rated power	350 W

Battery	Type	Lithium-Ion - 10INR19/66-4
	Model	60088
	Charge time	5-6 hrs
	Capacity	12800 mAh
	Nominal voltage	36 V
	Max. charge voltage	42 V
	Max. charging current	3A
	Rated capacity	460,8 Wh
Tyres	Wheel	10"
Charger	Model	XHK-985-42020 9
	Input	100-240 V 50/60 Hz 2.5 A
	Outlet	42V DC, 2A, 84W
	Protection	IP 20; Ta= 40°C; Class II
Riding modes and autonomy (4)	CONFORT	45 km
	SPORT	25 km

- (1) Height from the floor to the upper part of the handlebar.
- (2) Check the current local regulations.
- (3) The range measured with a weight of 80 kg, fully charged battery, in Comfort mode on a flat surface, without wind, and with an ambient temperature of approx. 25°C.
- (4) Measured with a weight of 80 kg, fully charged battery, flat surface, no inclination, no wind, and an ambient temperature of approx. 25°C.
- The total value of the exposed vibration in the hand-arm system does not exceed 2,5 m/s².
- The weighted acceleration to which the whole body is subjected does not exceed 0.5 m/s².
- The A-weighted emission sound pressure level at workstations is less than or equal to 70 dB.

- Technical specifications may change without prior notification to improve product quality.
- Made in China | Designed in Spain

9. DISPOSAL OF OLD ELECTRICAL APPLIANCES



This symbol indicates that, according to the applicable regulations, the product and/or battery must be disposed of separately from household waste. When this product reaches the end of its shelf life, you should dispose of the batteries/accumulators and take them to a collection point designated by the local authorities.

Consumers must contact their local authorities or retailer for information concerning the correct disposal of old appliances and/or their batteries.



Compliance with the above guidelines will help protecting the environment.

10. TECHNICAL SUPPORT AND WARRANTY

Cecotec shall be liable to the end user or consumer for any lack of conformity that exists at the time of delivery of the product under the terms, conditions, and deadlines established by the applicable regulations.

It is recommended that repairs be carried out by qualified personnel.

If at any moment you detect any problem with your product or have any doubt, do not hesitate to contact Cecotec official Technical Support Service at +34 96 321 07 28.

11. STATEMENT OF COMPLIANCE

MANUFACTURER: CECOTEC INNOVACIONES S.L

ADDRESS: C/ Pinadeta, 5/N, 46930, Quart de Poblet, Valencia (Spain)

DESCRIPTION: Electric scooter

MACHINE IDENTIFICATION: Bongo Serie A+ Max 45 Connected

FUNCTION: Electric vehicle with motor.

MODEL: 07303

It certifies the product described has been designed, manufactured and tested and complies with all applicable provisions.

EU DIRECTIVES IMPLEMENTED:

- Directive 2006/42/CE on machinery.

- Directive 2011/65/EU and delegated directive (EU) 2015/863 on the restriction of the use of certain hazardous substances in electrical and electronic equipment.
- Directive 2014/53/EU on the harmonisation of the laws of the Member States relating to the placing on the market of radio equipment.

APPLICABLE HARMONISED NORMS:

- EN 60335-1:2012+A11:2014+A13:2017+A1:2019+A14:2019+A2:2019
- EN ISO 12100:2010
- EN 17128:2020
- EN IEC 61000-6-3:2021
- EN IEC 61000-6-1:2019
- EN 300 328 V 2.2.2
- EN 301 489-1 V 2.2.3
- EN 301 489-17 V 2.2.4
- EN 62479:2010

12. COPYRIGHT

The intellectual property rights over the texts in this manual belong to CECOTEC INNOVACIONES, S.L. All rights reserved. The contents of this publication may not, in whole or in part, be reproduced, stored in a retrieval system, transmitted or distributed by any means (electronic, mechanical, photocopying, recording or similar) without the prior authorization of CECOTEC INNOVACIONES, S.L.

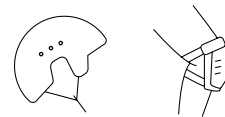


Fig./Img./Abb./Afb./ Rys./Obr. 1

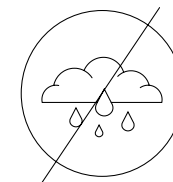


Fig./Img./Abb./Afb./ Rys./Obr. 2

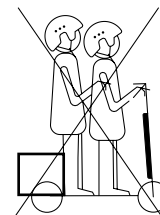


Fig./Img./Abb./Afb./ Rys./Obr. 3

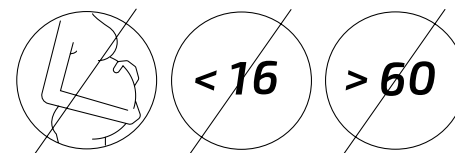


Fig./Img./Abb./Afb./ Rys./Obr. 4

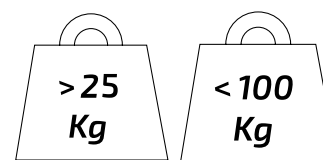


Fig./Img./Abb./Afb./ Rys./Obr. 5

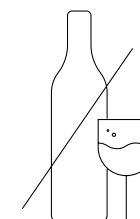


Fig./Img./Abb./Afb./ Rys./Obr. 6



Fig./Img./Abb./Afb./ Rys./Obr. 7

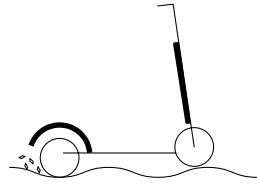


Fig./Img./Abb./Afb./ Rys./Obr. 8

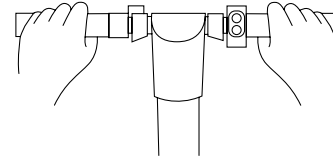


Fig./Img./Abb./Afb./ Rys./Obr. 13



Fig./Img./Abb./Afb./ Rys./Obr. 14

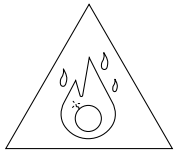


Fig./Img./Abb./Afb./ Rys./Obr. 9

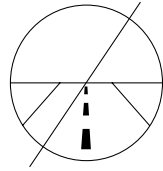


Fig./Img./Abb./Afb./ Rys./Obr. 10

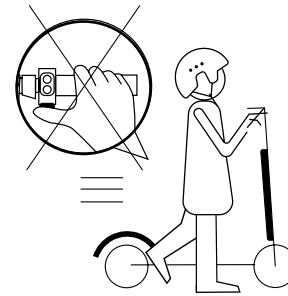


Fig./Img./Abb./Afb./ Rys./Obr. 15



Fig./Img./Abb./Afb./ Rys./Obr. 16

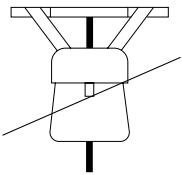


Fig./Img./Abb./Afb./ Rys./Obr. 11

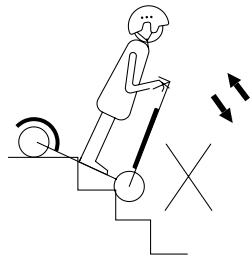


Fig./Img./Abb./Afb./ Rys./Obr. 12

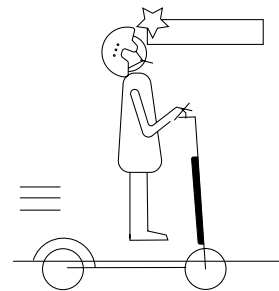


Fig./Img./Abb./Afb./ Rys./Obr. 17

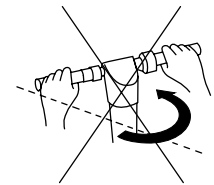


Fig./Img./Abb./Afb./ Rys./Obr. 18

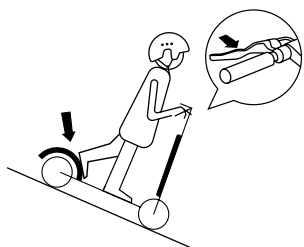


Fig./Img./Abb./Afb./ Rys./Obr. 19

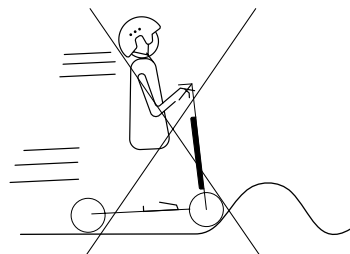


Fig./Img./Abb./Afb./ Rys./Obr. 20

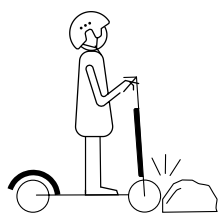


Fig./Img./Abb./Afb./ Rys./Obr. 21

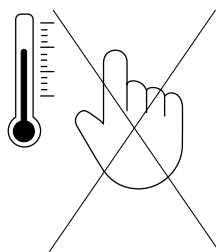


Fig./Img./Abb./Afb./ Rys./Obr. 22

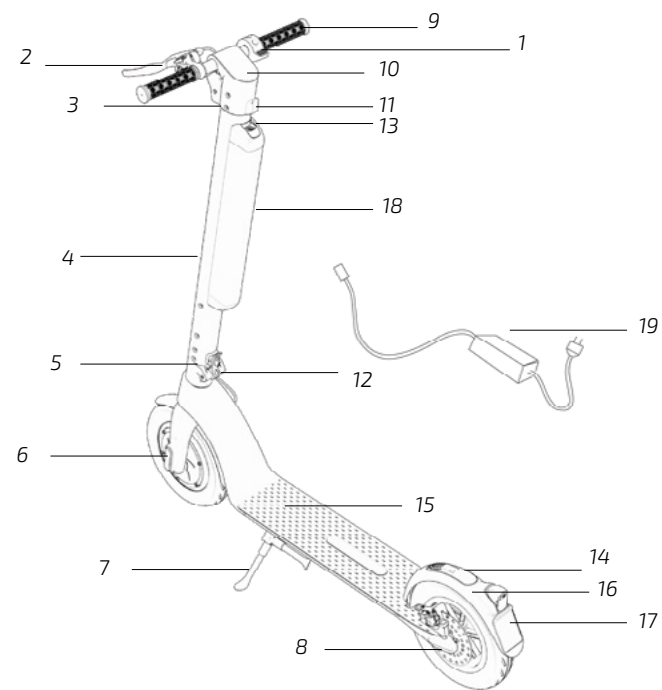


Fig./Img./Abb./Afb./ Rys./Obr. 23

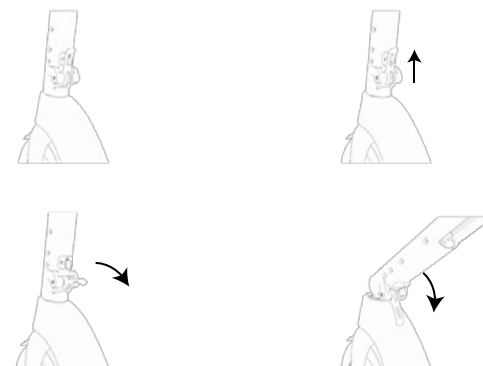
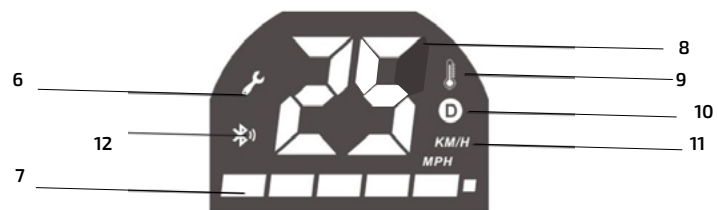
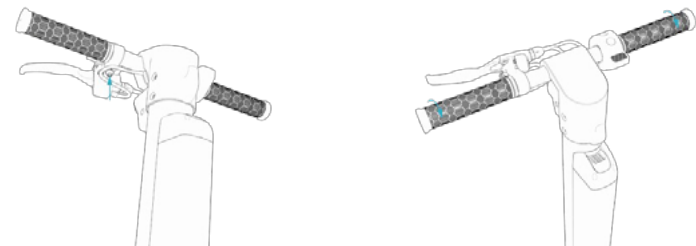
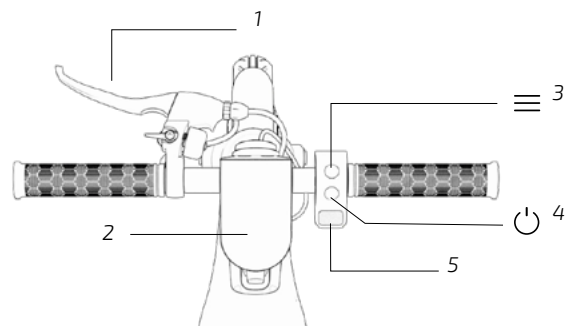


Fig./Img./Abb./Afb./ Rys./Obr. 24

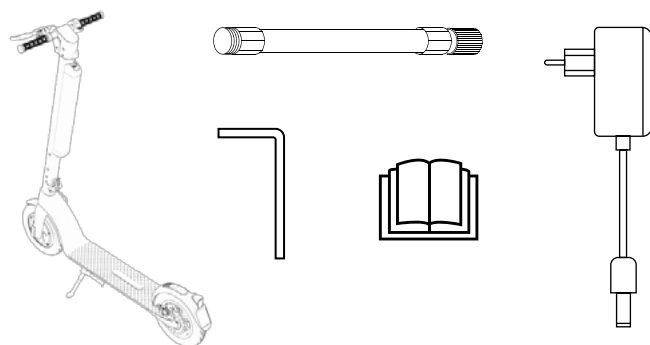


Fig./Img./Abb./Afb./ Rys./Obr. 25

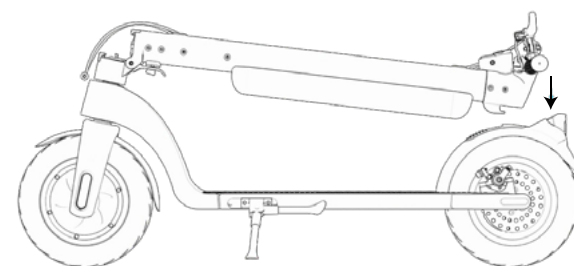


Fig./Img./Abb./Afb./ Rys./Obr. 26

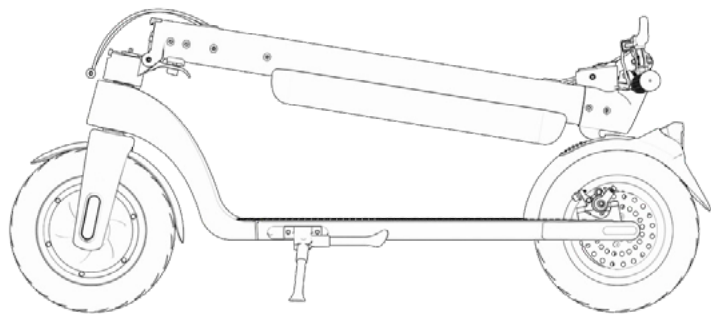


Fig./Img./Abb./Afb./ Rys./Obr. 27

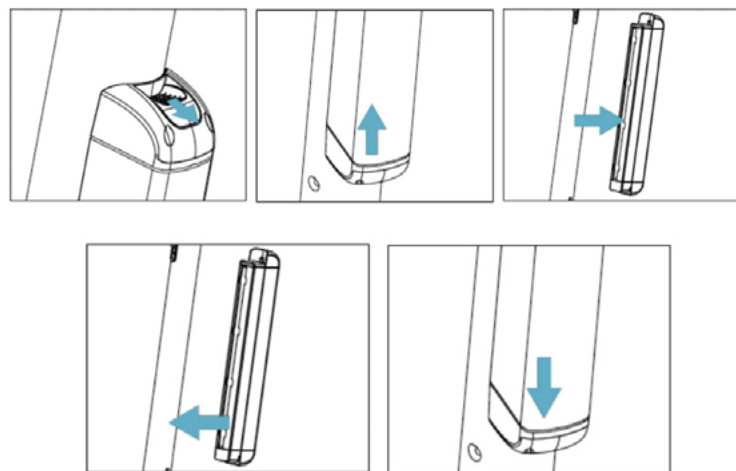


Fig./Img./Abb./Afb./ Rys./Obr. 28

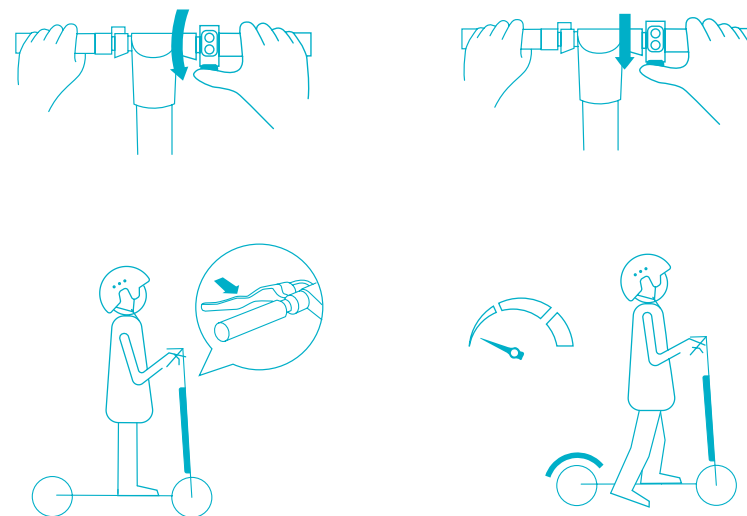
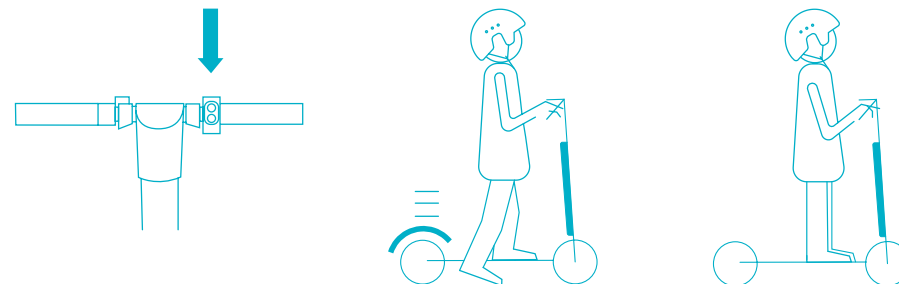


Fig./Img./Abb./Afb./ Rys./Obr. 29

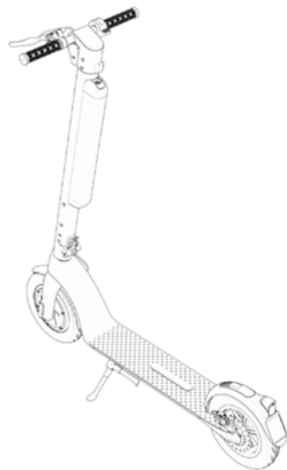


Fig./Img./Abb./Afb./ Rys./Obr. 30

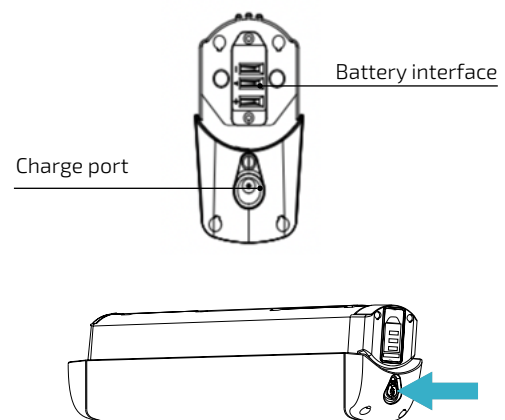


Fig./Img./Abb./Afb./ Rys./Obr. 31

www.cecotec.es

Cecotec Innovaciones S.L.
C/ de la Pinadeta s/n, 46930
Quart de Poblet, Valencia (Spain)
EA01220512